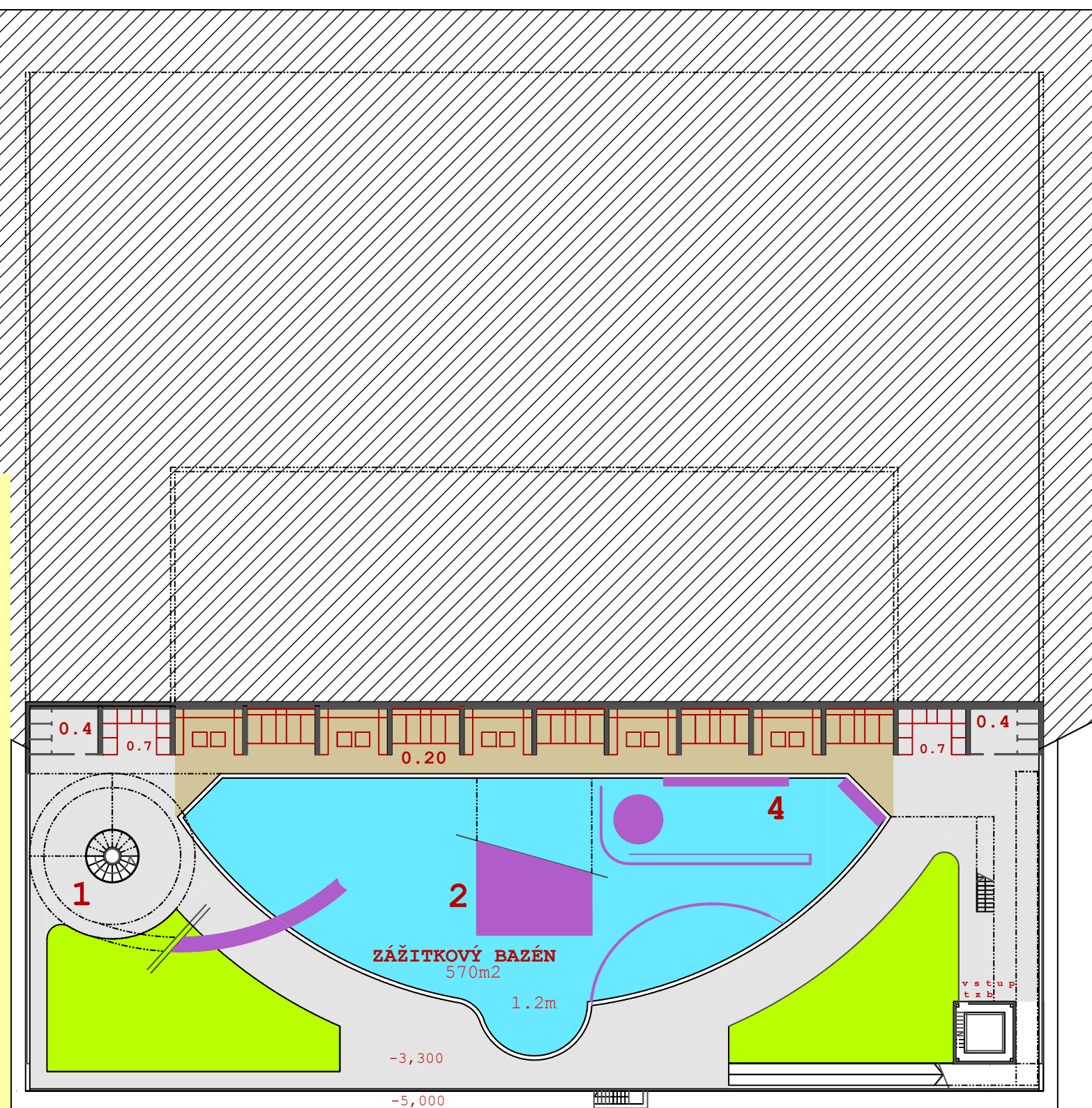


A step function graph is shown. The x-axis is horizontal and the y-axis is vertical. The function is zero for $x < 0$. At $x = 0$, it jumps to a positive value. At $x = 1$, it jumps to a higher positive value. At $x = 2$, it jumps to a negative value, which is labeled $-3,300$ in red. The function remains at this negative value until $x = 3$, where it jumps back to zero. The area under the curve for $x < 0$ is shaded in light blue.

A 3D architectural rendering of a water park layout. The central feature is a large, irregularly shaped swimming pool with a light blue water surface. To the left of the pool is a green grassy area. A yellow safety fence runs along the perimeter of the pool and the grassy area. On the right side of the pool, there is a long, narrow structure with multiple slides, each with a yellow and blue interior. In the bottom right corner, there is a small orange and black roller coaster car on a track. The entire scene is set against a plain white background.



L E G E N D A	0.8_ EXTERNÍ ŠATNOVÉ BOXY	0.16_ SKLAD VYBAVENÍ	0.24_ TERASA KIOSKU 2
0.1_ KASA	0.9_ POKLADNÍ	0.17_ TZB, SKLAD	0.25_ SKLAD TZB, CHL.LAHVE
0.2_ TURNIKET	0.10_ PLAVČÍK, PRVNÍ POMOC	0.18_ AKUMULAČNÍ NÁDRŽ, FILTRACE	
0.3_ ŠATNY / PŘEVÍKÁRNY	0.11_ BAR	0.19_ TZB	
0.4_ WC	0.12_ SKLAD	0.20_ POBYTOVÉ BOXY	
0.5_ WC INV	0.13_ OBČERSTVENÍ	0.21_ TERASA KIOSKU 1	
0.6_ WC PERSONAL	0.14_ KLUB	0.22_ KIOSK 1	
0.7_ SPRCHY	0.15_ PERSONÁL	0.23_ KIOSK 2	

50 měřítko 0

